

Swiss Suzuki Guitar Camp 2025

Alp Sellamatt May 29 – June 1

For the first time, the Swiss Suzuki Guitar Camp - for guitar only - will take place over the Ascension weekend. Our team of teachers is looking forward to inviting you to these four great days filled with guitar music!

We will be staying in the camp house of the Berghotel Sellamatt (sellamatt.ch).

Breakfast, lunch and dinner will be served at the hotel 200 meters away. In addition to the two practice rooms in the camp house, we also have the chapel at our disposal, where our final concert will take place.



Alp Sellamatt lies at 1400 m above sea level, below Chäserrugg, with a view of the Alpstein Massiv, in the middle of the hiking area with the Legend Trail and Toggenburg Sound Trail. Alp Sellamatt can be reached in summer via a toll road (CHF 13/day ticket or CHF 30/week ticket) or all year round with the Alt St. Johann - Sellamatt mountain railroad. The mountain station is right next to the hotel.

Course start: Thursday, May 29, 2025, Play-In: 2 p.m.

End of course: Sunday, June 1, 2025, final concert: 1.30 pm - 2.30 pm

All participants receive 15 lessons (45 min. each)

Saturday afternoon free (for individual excursions) - Friday evening: teachers' concert

Teaching team:

- **David Zipperle, Suzuki Guitar Teacher Trainer (Switzerland)**
- **Chiara Berardengo, Suzuki Guitar Teacher Level 3 (Switzerland)**
- **Giuseppe Mangia, Suzuki Guitar Teacher Level 5 (Italy)**

Costs:

- Course costs per child: CHF 180.- Sibling discount: CHF 20.-
- Accommodation with full board for three days per child: CHF 165.
- Adults pay for accommodation with full board for three days: CHF 195.
- Siblings not taking part in the course: CHF 165 (free for up to 4 years).

If you would prefer to stay overnight in the mountain hotel, you must book this yourself.

www.sellamatt.ch

Please specify "Guitar Camp" when booking.

At least 20 students must register for the course to take place.

So, register now!

Registration at the latest by 31.03.2025 via this link:

<https://forms.office.com/e/GTsdaFUaFA?origin=lprLink>

Parental supervision applies outside lesson times.

The timetable and further information will follow in mid-April.

Please transfer the total amount together with your registration to the following account:

Account holder: David Zipperle

IBAN: CH59 0024 5245 6154 7340 A

BIC: UBSWCHZH80A

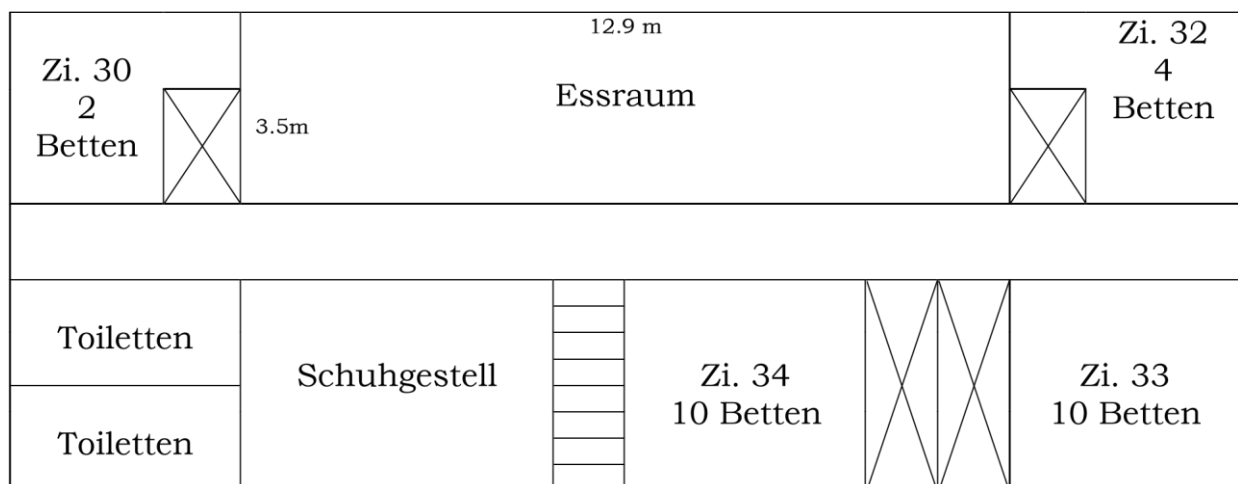
Remark: Suzuki Guitar Camp Sellamatt

In case of questions:

info@davidzipperle.com

Floor plan Sellamatt

Erster Stock



Zweiter Stock

